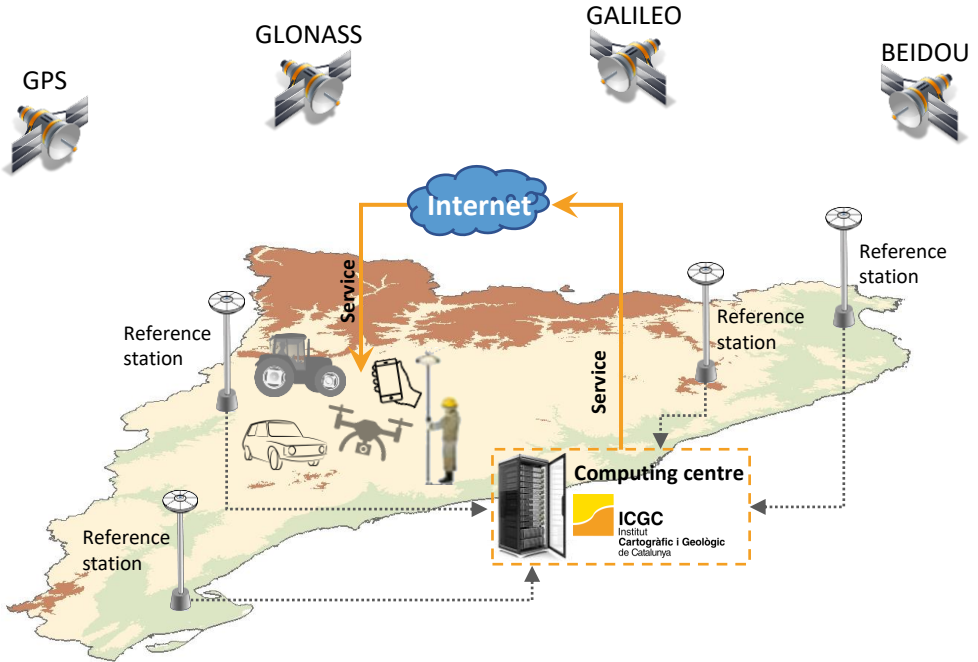
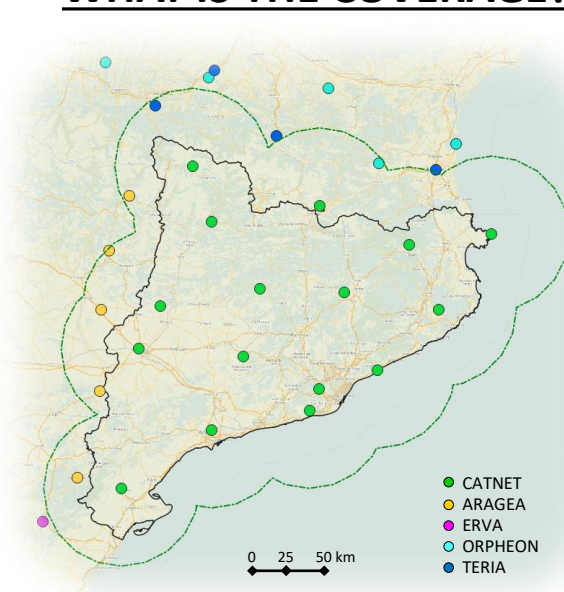


HOW DO THEY WORK?



WHAT IS THE COVERAGE?



- 16 CatNet stations
- 15 partner stations
- +25 years operating stations
- +15 years providing service
- +1000 active annual users
- +290K hours/year of service
- 24/7 service availability

IN WHAT FORMATS ARE BROADCASTED?

CatNet network positioning services are broadcasted in different formats, so to favour compatibility with most of the receivers in the market:

- **Available formats:** RTCM 3.2 MSM5 / RTCM 3.1 / RTCM 2.3 / CMR+

WHAT ACCURACY*¹ CAN BE ACHIEVED?

- **Centimetric accuracy (RTK):** 2-4 cm (planimetry) / 6 cm (altimetry)

Service* ²	Type	Constellations	Format
VRS3M* ³	Network	GPS + GLO + GAL + BDS	RTCM 3.2 MSM5
VRS3	Network	GPS + GLO	RTCM 3.1
VRS2	Network	GPS + GLO	RTCM 2.3
VRS+	Network	GPS + GLO	CMR+

- **Metric and decametric accuracy:**

Service* ²	Type	Constellations	Format
VRS2_DGNSS	Network	GPS + GLO	RTCM 2.3
XXXX2_DGNSS	Station	GPS + GLO	RTCM 2.3

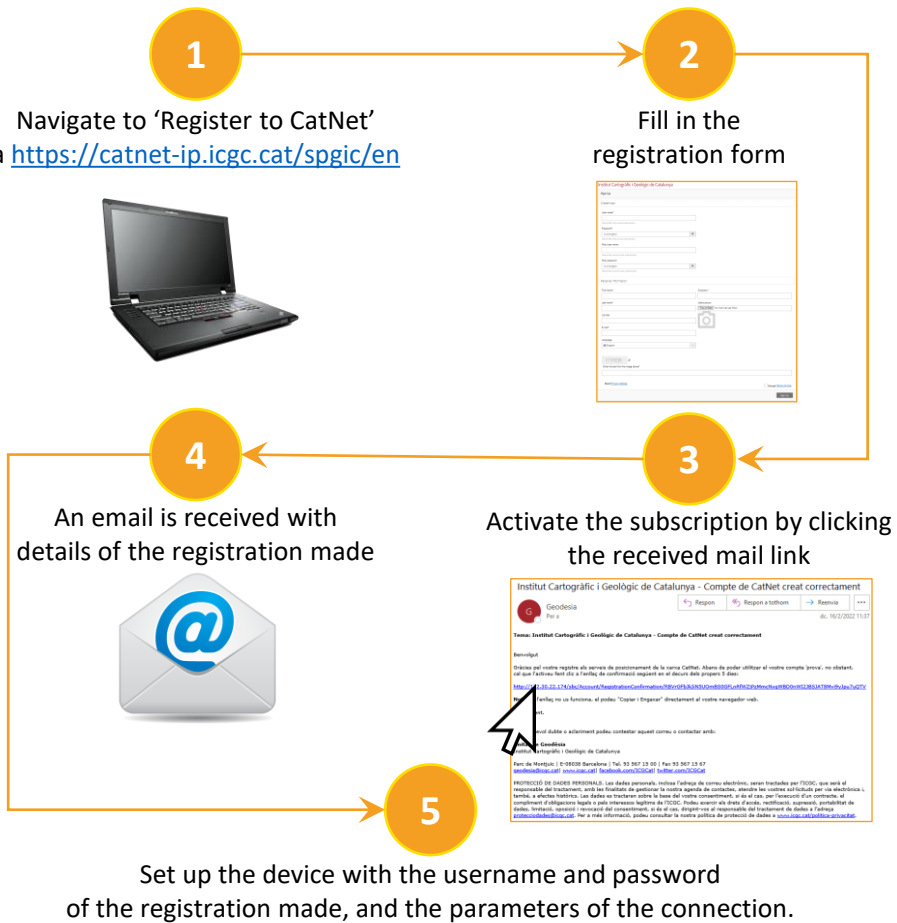
where XXXX is a CatNet station identifier: AVEL, BELL, BEUD, CASE, CREU, EBRE, ESCO, GARR, LLEI, LLIV, MARE, PLAN, REUS, SBAR, SONA, SORG.

*¹: The values shown do not consider factors such as the performance of the equipment, its configuration, the geometry of the GNSS constellation or the environment, which may adversely affect the accuracy of the final solution obtained.

*²: Some receivers may identify the service using other nomenclatures, such as: "Mount point", "Mountpoint", "Data stream" "Stream", "Punto de montaje", "Punto de anclaje", "Servicio".

*³: It is a service identical to the still valid 'VRS3_GAL'. It has been included following the recommendation of the "Consejo Superior Geográfico Specialized Commission of the Geodetic System Working Group" for the standardization of names.

COM ES PODEN UTILITZAR?



WHAT ARE THE CONNECTION PARAMETERS?

Caster URL / IP catnet-ip.icgc.cat (recommended) o 84.88.72.26 (alternative)

Port

2101

The *Creative Commons* license that governs ICGC information is the one for [Attribution 4.0 International](https://creativecommons.org/licenses/by/4.0/), known as CC BY 4.0.

Seu de l'Institut Cartogràfic i Geològic de Catalunya
Parc de Montjuïc / E-08038 Barcelona
Telèfon (+34) 93 567 15 00

Centre de Suport Territorial Pirineus
Passeig de Pompeu Fabra, 21 / E-25620 Tremp
Telèfon (+34) 973 65 08 30